

SS05

Slider type



- High lead: Lead 20
- CE compliance
- Origin on the non-motor side is selectable

Ordering method

SS05

Model	Lead	Model	Brake	Origin position	Grease option	Stroke	Cable length
	20: 20mm 12: 12mm 06: 6mm	S: Straight model R: Space-saving model (motor installed on right) L: Space-saving model (motor installed on left)	N: With no brake B: With brake	N: Standard Z: Non-motor side	N: Standard grease C: Clean room grease	50 to 800 (50mm pitch)	1K: 1m 3K: 3m 5K: 5m 10K: 10m

S2	I/O
Robot positioner S2: TS-S2	NP: NPN PN: PNP CC: CC-Link DN: DeviceNet™ EP: EtherNet/IP™ PT: PROFINET GW: No I/O board
SH	Battery
Robot positioner SH: TS-SH	B: With battery (Absolute) N: None (Incremental)
SD	I/O cable
Robot driver SD: TS-SD	1: 1m

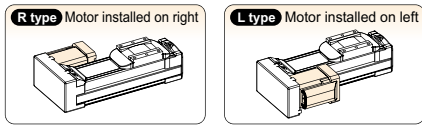
Note 1. Brake-equipped models can be selected only when the lead is 12mm or 6mm.
 Note 2. If changing from the origin position at the time of purchase, the machine reference amount must be reset. For details, refer to the manual.
 Note 3. The robot cable is flexible and resists bending.
 Note 4. See P.634 for DIN rail mounting bracket.
 Note 5. Select this selection when using the gateway function. For details, see P.96.

Basic specifications

Motor	42 Step motor
Resolution (Pulse/rotation)	20480
Repeatability (mm)	+/-0.02
Deceleration mechanism	Ball screw φ12
Maximum motor torque (N·m)	0.27
Ball screw lead (mm)	20 12 6
Maximum speed (mm/sec)	1000 600 300
Maximum payload (kg)	Horizontal 4 6 10 Vertical - 1 2
Max. pressing force (N)	27 45 90
Stroke (mm)	50 to 800 (50mm pitch)
Overall length (mm)	Horizontal Stroke+230 Vertical Stroke+270
Maximum outside dimension of body cross-section (mm)	W55 × H56
Cable length (m)	Standard: 1 / Option: 3, 5, 10

Note 1. Positioning repeatability in one direction.
 Note 2. When the stroke is longer than 600mm, resonance of the ball screw may occur depending on the operation conditions (critical speed). In this case, reduce the speed setting on the program by referring to the maximum speeds shown in the table below.

Motor installation (Space-saving model)



Allowable overhang

Horizontal installation (Unit: mm)	Wall installation (Unit: mm)			Vertical installation (Unit: mm)		
	A	B	C	A	B	C
Lead 20	2kg 413	139	218	2kg 192	123	372
4kg 334	67	120	4kg 92	51	265	
Lead 12	4kg 347	72	139	4kg 109	57	300
6kg 335	47	95	6kg 63	31	263	
4kg 503	78	165	4kg 134	63	496	
Lead 6	8kg 332	37	79	6kg 76	35	377
10kg 344	29	62	8kg 47	22	355	

Note. Distance from center of slider upper surface to carrier center-of-gravity at a guide service life of 10,000 km (Service life is calculated for 600mm stroke models).

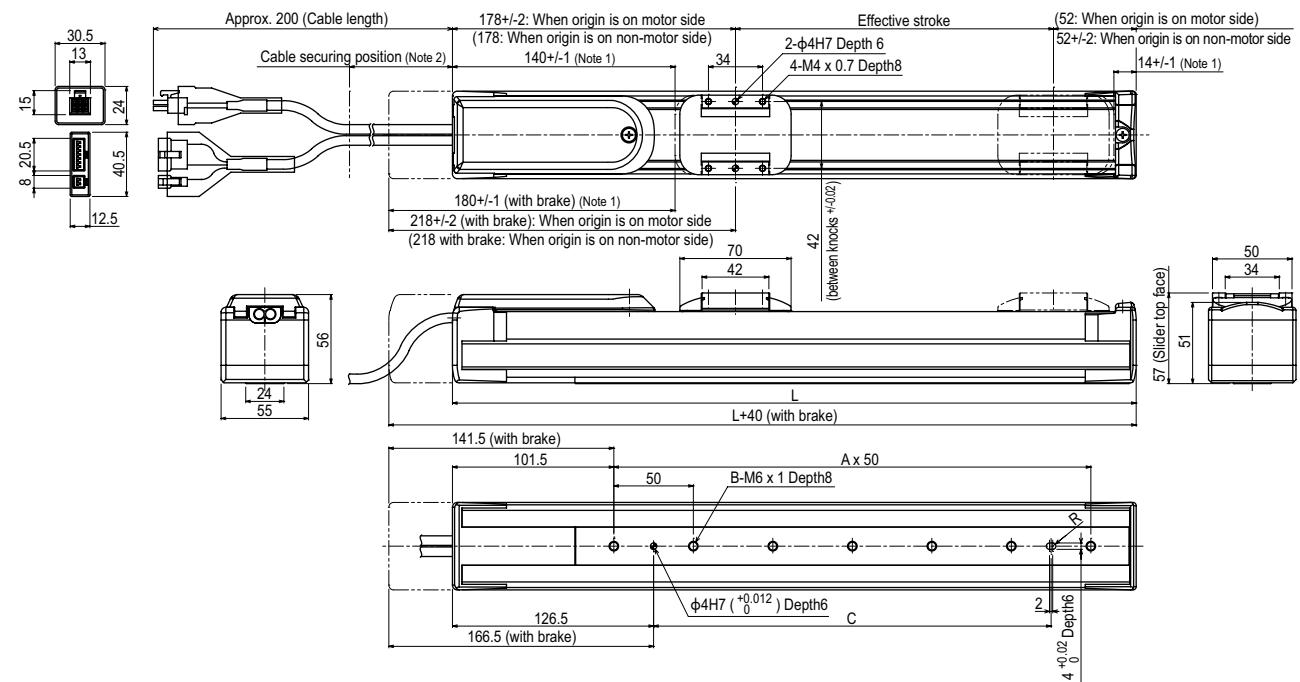
Static loading moment

Static loading moment (Unit: N·m)		
MY	MP	MR
0.5kg	578	579
1kg	286	286
1kg	312	312
2kg	148	148

Controller

Controller	Operation method
T\$2	IO point trace / Remote command
T\$H	Remote command
T\$D	Pulse train control

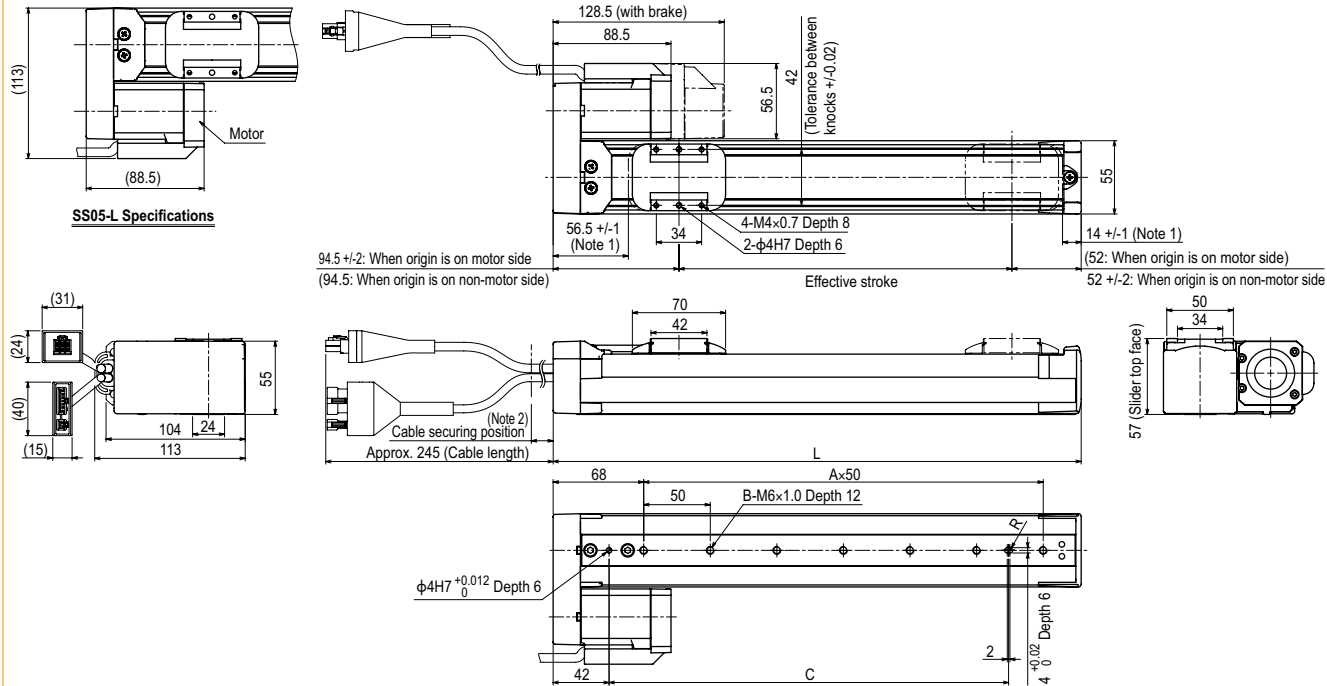
SS05 Straight model



Effective stroke	50	100	150	200	250	300	350	400	450	500	550	600	650	700	750	800
L	280	330	380	430	480	530	580	630	680	730	780	830	880	930	980	1030
A	3	4	5	6	7	8	9	10	11	12	13	14	15	16	17	18
B	4	5	6	7	8	9	10	11	12	13	14	15	16	17	18	19
C	100	150	200	250	300	350	400	450	500	500	500	500	500	500	500	500
Weight (kg)	2.1	2.3	2.5	2.7	2.8	3.0	3.2	3.4	3.6	3.8	4.0	4.2	4.4	4.6	4.8	5.0
Maximum speed for each stroke (mm/sec)	Lead 20	1000										933	833	733	633	
	Lead 12	600										560	500	440	380	
	Lead 6	300										280	250	220	190	
	Speed setting	-										93%	83%	73%	63%	

Note 1. Stop positions are determined by the mechanical stoppers at both ends.
 Note 2. Secure the cable with a tie-band 100mm or less from unit's end face to prevent the cable from being subjected to excessive loads.
 Note 3. The cable's minimum bend radius is R30.
 Note 4. These are the weights without a brake. The weights are 0.2kg heavier when equipped with a brake.
 Note 5. When the stroke is longer than 600mm, resonance of the ball screw may occur depending on the operation conditions (critical speed). In this case, reduce the speed setting on the program by referring to the maximum speeds shown in the table at the left.

SS05 Space-saving model **R** **L**



Effective stroke	50	100	150	200	250	300	350	400	450	500	550	600	650	700	750	800	
L	196.5	246.5	296.5	346.5	396.5	446.5	496.5	546.5	596.5	646.5	696.5	746.5	796.5	846.5	896.5	946.5	
A	2	3	4	5	6	7	8	9	10	11	12	13	14	15	16	17	
B	3	4	5	6	7	8	9	10	11	12	13	14	15	16	17	18	
C	100	150	200	250	300	350	400	450	500	500	500	500	500	500	500	500	
Weight (kg) ^{Note 4}	1.6	1.8	2.0	2.2	2.4	2.6	2.8	3.0	3.2	3.4	3.6	3.8	4.0	4.1	4.3	4.5	
Maximum speed for each stroke ^{Note 5} (mm/sec)	Lead20												1000	933	833	733	633
	Lead12												600	560	500	440	380
	Lead6												300	280	250	220	190
Speed setting												-	93%	83%	73%	63%	

Note 1. Stop positions are determined by the mechanical stoppers at both ends.

Note 2. Secure the cable with a tie-band 80mm or less from unit's end face to prevent the cable from being subjected to excessive loads.

Note 3. The cable's minimum bend radius is R30.

Note 4. These are the weights without a brake. The weights are 0.2kg heavier when equipped with a brake.

Note 5. When the stroke is longer than 600mm, resonance of the ball screw may occur depending on the operation conditions (critical speed). In this case, reduce the speed setting on the program by referring to the maximum speeds shown in the table at the left.

Note 6. The belt cover's left and right sides are asymmetrical. Therefore, if the motor mounting orientation is changed, the cover cannot be attached.