

A Monthly Journal for Yamaha World-Wide Dealers



YAMAHA NEWS

1973

No. **1**

YAMAHA for '73

Another Leap Forward in Overall Business Activities Hand in Hand with World-Wide Distributors & Dealers

Yamaha's upswing recorded in overall business activities throughout '72 has been something to behold. All products such as motorcycles, FRP boats, outboard motors and snowmobiles have run higher by far in production and sales as well. Yamaha has further consolidated its position as the unchallenged leading

manufacturer in the field of comprehensive leisure sports industry in Japan. Again, despite rather fluctuant conditions seen ahead both at home and abroad this year, Yamaha upholds its firm belief that another overall leap forward will be made hand in hand with distributors and dealers across the world.



Aiming for Larger Share New, Quality Models Will Be Introduced One after Another

Yamaha has been in consistent pursuit of the ultimate in quality and performance in developing any new products. After having established unrivaled fame and accumulated abundant stock of experiences in the field of 2-stroke engineering, Yamaha has most successfully marched out into the field of 4-stroke engineering, and then, into the field of revolutionary rotary engineering, intending just to more efficiently meet and satisfy always-growing diversification of users' demands. Now, Yamaha's world-proven technologies have covered every conceivable field of developing engines. Backed by tremendous confidence and excellent technologies, Yamaha will introduce new, quality models one after another on the market this year, too, in order to further broaden the scope of pleasure and utility, on the land, on the water, and on the snow alike.



Photo:
The Yamaha Rotary RZ201, the first rotary engine motorcycle prototype ever built in the world with the definite intention of mass production, made a quiet but sensational debut at the '72 Tokyo Motor Show. Yamaha has successfully consolidated all proven technical merits into this model, as represented by the in-line twin rotor revolving in the same direction as that of vehicle advance, CCR system, peripheral port, etc. The age of rotarization is about to open with Yamaha.

“Safe & Pleasurable”

Yamaha Will Take Steps Higher

Fatal traffic accidents by motorcycles have appreciably decreased in number since the industry and government authorities concerned combined efforts together for safety education in Japan. It was Yamaha that foreran such a significant safety campaign by means of the series of exclusive rider education schools such as traffic safety school, driving license school, sports school and trail school, all designed to train or educate motorcycle licencees or prospective licencees for safe and pleasurable motorcycling.

Under the established motto 'Safe & Pleasurable', Yamaha will become more aggressive to promote this campaign this year. As part of the program, Yamaha has already set out to construct a new technical center intended for use in organizing more sophisticated sessions of various rider education schools. The center will be constructed at a site near the main factory. Besides, Yamaha will expand this campaign to overseas markets in larger scale than ever, thereby to develop new markets through inspiring the sense of traffic safety to motorcyclists, and letting them fully enjoy safe and pleasurable motorcycling.



Spirited Sports Activities

Yamaha Will Do It Again Around the World



Yamaha has proven the most successful make in motorcycle sports all over the world. It is fresh to our memory that Yamaha won the 250cc world road race championship for the third consecutive year. Also, Yamaha's onslaught onto the world GP motocross caused a big, fresh sensation the previous year. Yamaha will launch even more spirited sports activities this year by entering powerful teams for all rounds of the world championship road race and motocross series. The FIM Prize 125cc MX series to be organized for the first time will be also fully covered by Yamaha. The machine which has proven excellent in the national championship events, will be ridden by S. Torao, '72 125cc champion rider in Japan. The main objective of those sports activities is to collect various technical data through actual racing as well as to maintain and elevate the prestige of the leading manufacturer. Competition circuits have been the best testing grounds for the improvement of Yamaha products both in quality and in performance. Yamaha will continue to incorporate every race-proven technical merit in production models.

Strengthened Lightweight Street Series for '73



YB 50



YB 60

Yamaha's popular lightweight street sports models ranging from 125cc to 50cc in size have been newly introduced on the market under the new designation of "YB Series". Compared with their respective forerunners, all models feature nicer looking and larger riding comfort as represented by the attractively chrome-plated fuel tank and new, quilted dual seat, while Yamaha's world-renowned technological merits such as 2-stroke rotary valve single cylinder engine, Autolube, smooth 4 speed transmission, etc. are all retained. The new YB series is claimed to do much more for ride-to-work motorcyclists and sporty holiday touring fans as well in the world. Every frame joint and corner have been specially reinforced for more demanding use. The YB 125 is available in two different versions, E and F. The E version is equipped with the electric/primary kick starting system, and the F version features the primary kick starting system only.

Powerful, dustfree and waterproof brakes on both wheels, and large-size lighting equipment ensure excellent riding safety.

YB50 SPECIFICATIONS

PERFORMANCE

Max. speed range.....	80 km/h
Climbing ability.....	18°
Min. turning radius.....	1,800 mm
Min. braking distance.....	6.5 m @35 km/h

ENGINE

Type.....	2-stroke, Rotary valve, Single
Displacement.....	49 cc
Bore & Stroke.....	40 mm x 39.7 mm
Compression ratio.....	7.1 : 1
Max. horsepower.....	4.8 ps @7,000 rpm
Max. torque.....	0.52 kg-m @6,000 rpm
Lubrication system.....	Autolube
Starting system.....	Primary kick starter
Transmission.....	4-speed gearbox

DIMENSIONS

Overall length.....	1,795 mm
Overall width.....	720 mm
Overall height.....	1,030 mm
Wheelbase.....	1,165 mm
Min. ground clearance.....	130 mm

WEIGHT (Net).....71 kg

FUEL TANK CAPACITY.....7.5 lit.

OIL TANK CAPACITY.....1.3 lit.

TIRES front.....2.25-17-4PR

rear.....2.25-17-4PR



YB 80



YB 100



YB 125

YB60 SPECIFICATIONS

PERFORMANCE

Max. speed range.....	83 km/h
Climbing ability.....	19°
Min. turning radius.....	1,800 mm
Min. braking distance.....	6.5 m @ 35km/h

ENGINE

Type.....	2-stroke, Rotary valve, Single
Displacement.....	58 cc
Bore & Stroke.....	42mm x 42mm
Compression ratio.....	68 : 1
Max. horsepower.....	53. ps @7,000 rpm
Max. torque.....	0.57 kg-m @6,000 rpm
Lubrication system.....	Autolube
Starting system.....	Primary kick starter
Transmission.....	4-speed gearbox

DIMENSIONS

Overall length.....	1,795 mm
Overall width.....	720 mm
Overall height.....	1,030 mm
Wheelbase.....	1,165 mm
Min. ground clearance.....	130 mm

WEIGHT (Net)..... 71 kg

FUEL TANK CAPACITY..... 7.5 lit.

OIL TANK CAPACITY..... 1.3 lit.

TIRES front..... 2.25-17-4PR

rear..... 2.25-17-4PR

YB80 SPECIFICATIONS

PERFORMANCE

Max. speed range.....	90 km/h
Climbing ability.....	20°
Min. turning radius.....	1,800 mm
Min. braking distance.....	7.5 m @35 km/h

ENGINE

Type.....	2-stroke, Rotary valve, Single
Displacement.....	73 cc
Bore & Stroke.....	47 mm x 42 mm
Compression ratio.....	6.8 : 1
Max. horsepower.....	6.7 ps @7,500 rpm
Max. torque.....	0.72 kg-m @6,000 rpm
Lubrication system.....	Autolube
Starting system.....	Primary kick starter
Transmission.....	4-speed gearbox

DIMENSIONS

Overall length.....	1,835 mm
Overall width.....	720 mm
Overall height.....	1,045 mm
Wheelbase.....	1,165 mm
Min. ground clearance.....	135 mm

WEIGHT (Net)..... 79 kg

FUEL TANK CAPACITY..... 7.5 lit.

OIL TANK CAPACITY..... 1.3 lit.

TIRES front..... 2.50-17-4PR

rear..... 2.50-17-4PR



1. Engine

The 2-stroke single-cylinder rotary valve engine delivers suitable and sufficient power for down-town going, as well as for sporty touring. High and reliable performance is always backed by Yamaha-original Autolube to adjust oil supply best in accordance with rpm.

YB100 SPECIFICATIONS

PERFORMANCE

Max. speed range.....	110 km/h plus (68 mph plus)
Climbing ability.....	22°
Min. turning radius.....	1,870 mm (73.6 in.)
Min. braking distance.....	6.5 m @35 km/h (2 ft. @22 mph)

ENGINE

Type.....	2-stroke, Rotary Valve, Single
Displacement.....	96 cc (5.86 cu. in.)
Bore & Stroke.....	52 x 45.6 mm (2.047 x 1.795 in.)
Compression ratio.....	7.2 : 1
Max. horsepower.....	9.7 hp @7,500 rpm
Max. torque.....	0.95 kg-m (6.9 ft-lb) @6,500 rpm
Lubrication system.....	Autolube
Starting system.....	Primary kick starter
Transmission.....	4-speed gearbox

DIMENSIONS

Overall length.....	1,915 mm (75.4 in.)
Overall width.....	785 mm (30.9 in.)
Overall height.....	1,060 mm (41.7 in.)
Wheelbase.....	1,190 mm (46.9 in.)
Min. ground clearance.....	140 mm (5.5 in.)

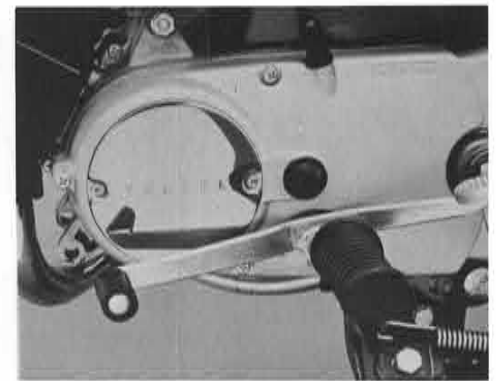
WEIGHT (Net)..... 92 kg (20.3 lbs.)

FUEL TANK CAPACITY..... 9.3 lit. (2.5 US gal.)

OIL TANK CAPACITY..... 1.3 lit. (1.4 US qt.)

TIRES front..... 2.50-18-4PR

rear..... 2.50-18-4PR



2. Transmission

The super-smooth 4-speed transmission is positively one of the most noteworthy features. Gear shifting is always effortless even for the novice. Outstanding riding comfort is ensured under all conditions.



3. Fuel Tank

Eye-pleasing accent in appearance. Impressive coloring and smart shaping feature Yamaha's unique design concept. Well-portioned shape also ensures better knee-gripping for long fatigue-free cruising. Helmet holder is another new feature.



4. Seat

The newly designed dual seat is of quilted type. Nice to lock at, and comfortable to sit on. Important factor to make this series more appealing to the action-loving modern youth.

YB125 SPECIFICATIONS

PERFORMANCE

Max. speed range.....	100 ~ 110 km/h (62 ~ mph)
Climbing ability.....	20°
Min. turning radius.....	1,980 mm (78.0 in.)
Min. braking distance.....	7.5 m @35 km/h (24.6 ft. @22 mph)

ENGINE

Type.....	2-stroke, Rotary Valve, Single
Displacement.....	123 cc (7.51 cu. in.)
Bore & Stroke.....	56 x 50 mm (2.205 x 1.969 in.)
Compression ratio.....	6.8 : 1
Max. horsepower.....	11 ps @6,700 rpm
Max. torque.....	1.25 kg-m (9.0 ft-lb) @5,000 rpm
Lubrication system.....	Autolube
Starting system.....	Primary kick /electric
Transmission.....	4-speed gearbox

DIMENSIONS

Overall length.....	1,880 mm (74.0 in.)
Overall width.....	745 mm (29.3 in.)
Overall height.....	1,045 mm (41.1 in.)
Wheelbase.....	1,240 mm (48.8 in.)
Min. ground clearance.....	133 mm (5.3 in.)

WEIGHT (Net)..... 104 kg (229 lbs.)

FUEL TANK CAPACITY..... 9.6 lit. (2.5 US gal.)

OIL TANK CAPACITY..... 1.7 lit. (1.8 US qt.)

TIRES front..... 3.00-16-4PR

rear..... 3.00-16-4PR

Dauntless Globe Trotter

S. Shoji and Yamaha Cover 73,000Km



An around-the-world trip on a motorcycle may be the ultimate in the fun and excitement of motorcycle touring. Not a few have attempted such an adventure, and their exciting stories have been reported to fully thrill readers, so often. Nevertheless, this type of adventure will never cease to be something amazing or wonderful and fresh to all of us. Here introduced is a story of such a dauntless fellow who has just returned to Japan after having covered a total distance of 73,291 km, riding a Yamaha 250 DT1 within some 22 months.

His fantastic touring experiences are summarized as follows:

Start

It was on Jan. 8, 1971 that I left Japan abroad the P & O for Pakistan to start off my world tour on a bike. I carried only 1,000 dollars with me. No weapons of any sort. A wooden box was filled with clothing for the four seasons, tent and other necessities. (On returning home, I found the box covered with scribblings of the friends around the world.)

Karachi—West Pakistan

I managed to stay five days at Yamaha sales agency in Karachi. I was somewhat embarrassed to learn that nobody works on the afternoon of every Friday in the Islam countries.

India

"Where did you come from, and how much does this motorcycle cost?" "How much does that camera cost?" Virtually, all of the questions asked by policemen seemed to be "how much". In Taj Mahal I was just spelt bound with its wonderful beauty. But, there is an old saying that pleasure is always followed by suffering. It came just true when I was attacked by a flock of bald eagles, and barely got away.

Outskirts of Kabul—Afganistan

There was snow at Kabul approx. 1,000 meters above sea level. I was a little bewildered by the sudden change experienced in going from mid-summer country to mid-winter one.

I was nearly frozen by the terrific coldness, and had to take off for Teheran right away.

Turkey

There were still 50 cm of snow even in March in the mountain regions of this country. My favorite 250 trail DT1 proved very dependable, and enabled me to ride

over all tough places on the way to the Black Sea.

Athens—Greece

The rain which had continued all the way from Istanbul, cleared up to bright blue sky, at length, in Athens. It was on March 11. The military guards patrolling the public square were very smart in appearance.

Italy

Met up with a young Japanese making a global trip on a bicycle in front of the Tower of Pisa. He turned out to be deaf-and-dumb, and no conversation took place between us. I did not even find out his name. Later my sister wrote to me that an article about him appeared in the Japanese newspapers.

Portugal

Southernmost country of Europe. Various places I visited were overflowing with tourists from America.

Madrid—Spain

I watched a bull fight show without delay. None of the popular bull fighters appeared as April was the time when they went out for overseas shows. Those who did show up merely pricked the rear end of the bulls with their knives, thus extremely spoiling interest.

Paris—France

The long-awaited Paris did not arouse much excitement. I took many pictures of the Eiffel Tower on hearing that it might be torn down soon.



Belgium

Made the tour from Spain with Mr. Onishi, also on a bike. Neither of us had any trouble with our machines.

Holland

Fished for soles for our supper. We carefully took our catch to the youth hostel on the German border where we ate them after frying them in butter at the hostel's self-service kitchen.

Sweden to North Cape

On July 31st, we reached North Cape, the northernmost tip of Europe. While enthralled by the setting sun, I said softly to my machine, "Well, my chap, we finally made it".

Finland

On the road down to Helsinki, saw many huts selling bear and reindeer hides. They were priced around 500 dollars each. I bought one, being so cheap, but the hair soon started to fall out, probably due to poor tanning.

London—England

Stayed in London some two months on the pretext of studying English. During that time, I had 1,000 dollars sent from home, but shortly afterward the dollar went on slump, and before I knew, I took a loss of 200 dollars. What a misfortune!



German-Austrian border

The Alps in the Tyrol district are fantastically beautiful. I became envious of the peaceful life seen in these restful mountain villages.

Germany to Zurich

Became acquainted with Mr. Kawashima (about 22 years) who was working part time and teaching karate on the side.

Brazon—Roumania

Brick cottages under construction offered the best camping site. Being cold outside, spread reindeer hide and slept in a sleeping bag over that.

Yugoslavia and Adrian Sea

Weaving my way among other campers, pitched my tent on the shores of the lake. Supper was the usual bread, sausages, marmalade, cheese, and orange, together with some watermelon.

Bulgaria

I stayed three days at the house of Mr. Berry whom I became acquainted while filling in gas at a gasoline station. We were utterly unable to communicate with each other, spoken or written, much to our regret. A young girl there brought out a wash basin full of water, and washed my feet. Astounding, really!

Montreal—Canada

On September 6, sailed from Rotterdam, leaving behind Continental Europe. On the 16th of that month, arrived in Montreal, Canada. Stood entraptured at the Canadian sunset which was incredibly beautiful.

Daytona Beach, Florida—USA

Florida in October was packed with elderly ladies who had come here to escape the cold North. Later on in Los Angeles, I was lucky enough to spend time together with a young charmer.



He will Attack Southern Hemisphere Next Time

He stayed in America just for one year, working for painters or garages for livelihood. Originally he intended to cover the Southern Hemisphere areas such as Africa, Australia and Central-South America, too, of course. However, he had to give up this plan because of extremely troublesome custom or shipment procedures inevitably involved therein. He felt it rather regrettable. "Touring on a Yamaha has enabled me to experience lots of things wonderful and invaluable" says he, "I have learnt much from closer contact with various people in the world, which only touring on a motorcycle could afford, and I wish I could tour around the Southern Hemisphere next time, and that, on a Yamaha".



Mr. Tartarini, 2nd from left, president of Italjet is taking the most important role in expanding Yamaha's share in Italy.

They Are in High Spirits

Italian Dealers Meeting

Motorcycling has been traditionally popular in Italy. Many a famous brand has enlivened the market, backed by Italian people's unusual enthusiasm to motorcycling, up to now. In earlier days than the rise of Japanese manufacturers, Italian brands dominated the field of world GP road racing, and especially the names of such great riders as C. Ubbiali, T. Provini or G. Agostini will be never forgotten in association with the unrivaled racing successes recorded by MV Agusta for the past decades.

Now, Italy is coming out as one of the most promising markets for Japan-made

motorcycles, and the brand of Yamaha is becoming progressively popular among Italian enthusiasts, thanks to strenuous efforts by Italjet S.A.S., distributors for Yamaha, in close cooperation with affiliated dealers. As part of sales promotional program for '73, they sponsored a big meeting of dealers. 90 dealers gathered together from every part of Italy, and Yamaha's new models which were introduced, greatly interested and encouraged them to exert more efforts for sales increase. Now, they are in high spirits to increase sales by 100% this year.

Bright and harmonious! Dealers have got more confidence in Yamaha motorcycles.



Looking at the cutaway of exciting 4-stroke TX 750 engine.



The 350 R5 is also attracting their particular attention.



Motorcycle Glossary

Be Familiar with Them, Now

Blow out

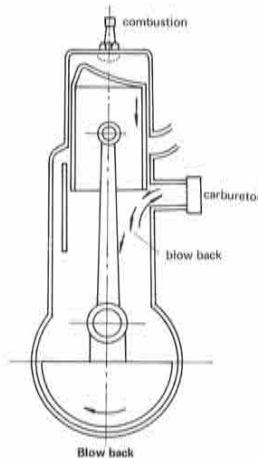
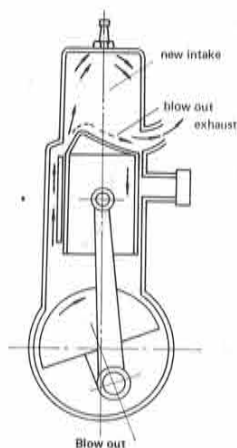
Fresh intake is sometimes left partly unburnt and driven out. This phenomenon is called 'blow out'. In a 4-stroke engine, the intake valve opens before the exhaust valve has closed, for better intake efficiency. In a word, both valves are kept opened at the same moment. On the other hand, in a 2-stroke engine, the exhaust port is located nearest the top dead center, and it is kept opened during the length of time the transfer port is left opened. Resultantly, 'blow out' will be the case with both engines.

Blow back

Fresh intake which has been absorbed into the cylinder, is pushed back into the carburetor through the intake port by piston's reciprocating motions. This is called 'blow back'.

Blowby

Mixed gas, whether burnt or unburnt, escapes into the crankcase through the gap between the cylinder and the piston. Wear in cylinder, piston or piston ring, and lack of oil will cause this undesirable phenomenon.



Backfire

Abnormal combustion which takes place inside the carburetor, or between the carburetor and cylinder. It is caused by too thin mixture, incorrect valve or port timing, or too advanced ignition timing.

Knocking

Intermittent tapping noise which is heard inside the running engine. Wears in moving parts may sometimes cause it, but too advanced ignition timing, too thin mixture, too high temperature of mixture, or carbon deposits inside the crankcase may much oftener result in this phenomenon.

Negative pressure

The standard air pressure is 1kg per cm². The pressure below this level is called negative pressure. Mixed gas is induced into the crankcase by making use of this negative pressure.

Overlap

The intake valve and exhaust valve are kept opened at the same moment for higher intake efficiency. (See 'blow out').

Sport Article Show—West Germany

Yamaha Motor N.V. exhibited a full line of Yamaha outboard motors in cooperation with Metzeler, at the Sport Article Show recently held in Köln, West Germany. Metzeler is one of the leading rubber boats manufacturers in West Germany, and cooperating with Yamaha Motor N.V. for the season 1973. It is hoped that this business cooperation will prove fruitful to both companies concerned.



THANKS FOR COOPERATION

Yamaha thanks so much for cooperation extended by distributors and dealers throughout the world regarding the supply of informative data for Yamaha News and Yamaha Time. Up to now, a lot of answers to the questionnaires have been received, each of which contains so much which proves useful and informative for the further improvement of the above publications.

CONTRIBUTIONS INVITED

Just send us pictures you've taken of stories, interesting happenings or, extraordinary incidences-any-thing if it's about YAMAHA. A commemorative gift will be sent to those subscribers whose pictures are accepted for publication.

YAMAHA MOTOR CO., LTD. 2500 SHINGAI IWATA SHI, SHIZUOKA KEN, JAPAN.

Ice Race - Converted Yamaha



YAMAHA *Topics*

Ice racing is very much popular among speed enthusiasts in Scandinavian countries. Yamaha machines converted for ice racing have recently appeared on the scenes to give spectators extra fun and thrill. Pictured here are Yamaha's large displacement machines modified and converted by young workmen of Arwidson, Finnish Distributors for Yamaha. Those machines prove really ice-raceworthy.

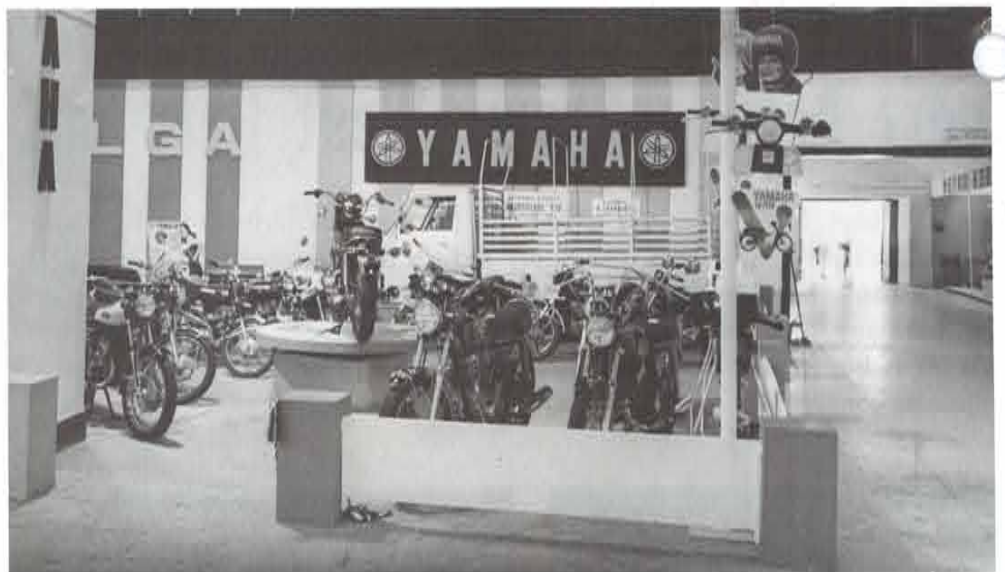


"Vaxa Hia Yamaha"



Ideal for My Son

Ron Toombs, Australian road race champion just samples a new Yamaha Mini Motocrosser GT-MX which has been recently delivered from McCulloch of Australia, Yamaha distributors in New South Wales. "It will be ideal for my son, Warren" says he.



The Salonica Trade Fair is the most important event of the kind in Greece. It is annually held in Athens. Eliopoulos Brothers, Ltd., distributors for Yamaha in Greece arrange the Yamaha corner in a very impressive way under the slogan

"Vaxa Hia Yamaha" meaning 'I wish I had a Yamaha'. Thanks to strenuous efforts by distributors and dealers, sales of Yamaha motorcycles increased by massive 40% during 1972, compared to the previous year.

Here pictured are the scenes of Yamaha corner arranged by Auto Avenida in such an impressive way for the 4th International Fair of Luanda in Angora. Yamaha motorcycles are steady in expanding their market share in this country. Interest focussed on Yamaha's lightweight models at the fair.

International Fair of Luanda – Angora



Yamaha Basketball Team

Young people in Indonesia are very much interested in Yamaha activities. The basketball team led by Mr. K.G. Thamrin, a Yamaha dealer in the Palembang area, South Sumatra, recently provided the highlight of Yamaha activities by scoring a lot of wins in big games.

The team was organized two years ago, and is now considered to be the most successful basketball team in their region. Their successes in games are appreciably elevating the brand image of Yamaha.



I Love Yamaha

Indonesia is one of the largest markets for lightweight motorcycles, but Yamaha's big machines are also gradually winning popularity among more action-loving people. "It

is very good, and I love Yamaha like my boy friend" says Miss Cecil. Her boy friend purchased the Yamaha 650 XS2 earlier than anybody in the Bandung area.

Sales Promotional Articles for Outboard Motors and Boats

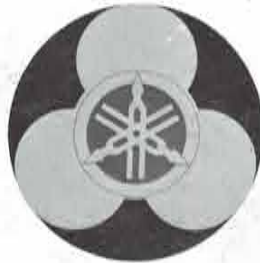
Yamaha has recently prepared new sales promotional articles in wide variety for outboard motors and boats. Articles are all intended for use by world-wide distributors and dealers, and designed to help promote sales of Yamaha outboard motors and boats. It is hoped by

Yamaha that all articles would be fully utilized at proper times, at proper places and for proper persons for the purpose of sales promotion.

As usual, half the price will be borne by Yamaha.



WB - 105 Coaster US \$ 0.08
(5 pieces per set)



WC - 101
User's sticker US \$ 0.03



WB - 103 Sea knife US \$ 2.88



WD - 103 Paper bag US \$ 0.15



WF - 102 Balloon (Vinyl) US \$ 6.36
Size: 120cm (48 in.)



WA - 102 Necktie pin US \$ 2.40
Color: gold



WF - 104 Roll sticker US \$ 2.40
Size: 330 x 9 cm (121.2 x 3.6 in.)



WB - 104 Ash tray US \$ 3.84



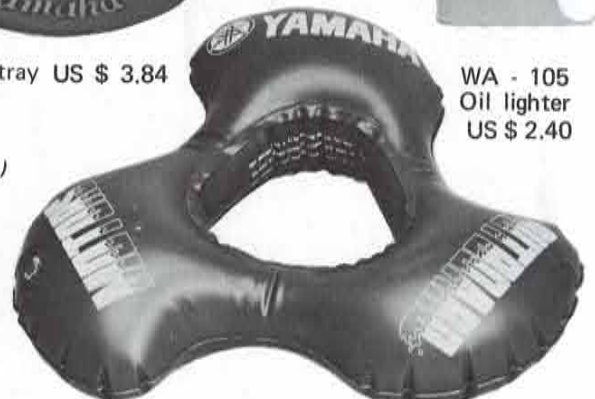
WA - 105 Oil lighter
US \$ 2.40



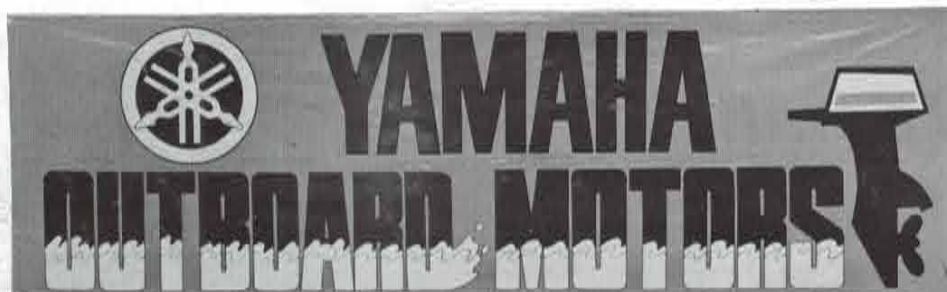
WF - 105 Display sticker (Plastic)
Size: 100 x 20 cm (44 x 8 in.)
US \$ 5.40



WF - 106 Display sticker (Plastic) US \$ 8.40
Size: 190 x 34 cm (76 x 13.6 in.)



WB - 106 Leisure cushion (Vinyl) US \$ 2.40
Size: 44 cm (17.2 in.)



WF - 103 Hanging screen (Vinyl) US \$ 3.60
Size: 250 x 80 cm (100 x 32 in.)



WE - 109 Marine hat US \$ 1.68